



LHM600 SHL Mobile Harbour Crane



SPMT Cable Reel Lift at ABLE Seaton Port



Excavators and MEWP at ABLE Seaton Port



SPMT Sea Bed Plough Lift

ABLE own and operate an extensive range of cranes, plant, SPMTs and specialist project cargo equipment at ABLE's Port Facilities, which provide programme and economic benefits for clients.

Included in the wide range of equipment is the UK's largest Mobile Harbour Crane and a fleet of Self-Propelled Modular Transporters with power packs.

Whatever your lifting requirements may be, our fully trained technical team can provide assistance.



Contents

Liebherr LHM600 SHL Mobile Harbour Crane	4-7
Liebherr LR 1300 Crawler Crane	8-9
Self Propelled Modular Transporters	10-11
Zoomlion RT55 Rough Terrain Crane	12-13
Wind Marshalling Equipment	14-15
Plant & Equipment	16-17



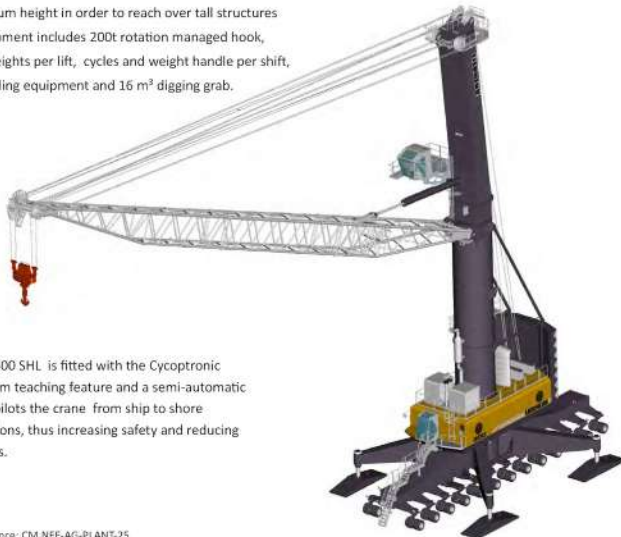
**Operating a
Zero Harm
Culture**

Liebherr LHM600 SHL Mobile Harbour Crane

The LHM600 SHL is characterised by rapid and efficient handling of loads up to 208t. It also optimally manages the handling of containers, as well as general and bulk cargoes. With an outreach of up to 58 metres, the LHM600 SHL is the ideal handling solution for ships up to Superpost-Panamax size.

Unique technology such as the optimised undercarriage concept or the specialist developed crane control system make Liebherr mobile harbour cranes among the most powerful material handling equipment in the world. The flexibility of the mobile harbour crane makes it effective for all areas of application in the harbour and thereby guarantee the highest level of effectiveness.

- The UK's largest harbour crane.
- Lifting capacity 208t.
- Travel on-site 5km/hr.
- Max. radius 58m (116m diameter).
- Hoisting/lowering max - 90 m/min.
- 61m Hook Height
- 23.4m Boom pin height - allows increased reach over tall structures
- Can operate up to 24m/s wind speed
- Can operate anywhere on site without load spreading
- 360° Steering
- Increased fulcrum height in order to reach over tall structures
- Specialist equipment includes 200t rotation managed hook, recording of weights per lift, cycles and weight handle per shift, container handling equipment and 16 m³ digging grab.



The Able LHM600 SHL is fitted with the Cycprotronic anti-sway system teaching feature and a semi-automatic system which pilots the crane from ship to shore including rotations, thus increasing safety and reducing operation times.



Outreach (m)	Maximum crane capacity 208 t	
	Hook operation on the ropes Heavy lift	Spreader operation under
	Single lift	Twin lift
11	(1)	(1)
12	208.0	50.5
17	208.0	50.5
18	203.9	50.5
20	185.4	50.5
22	168.4	50.5
24	153.2	50.0
26	141.2	50.0
28	130.4	50.0
30	120.0	50.0
32	110.5	50.0
34	102.0	50.0
36	94.8	50.0
38	88.6	50.0
40	82.7	50.0
42	77.3	50.0
44	72.2	50.0
47	65.4	50.0
48	63.5	48.1
50	59.6	44.4
52	56.1	40.9
53	54.5	39.1
56	50.2	36.7
58	47.8	34.3

Weight rotator 3.5 t
Weight fully automatic telescopic spreader 9 t
Weight twin lift spreader 10.7 t

Liebherr LR 1300 Crawler Crane

The LR 1300 crawler crane is primarily designed for lifting work with high loads. The crane convinces with its high mobility and flexible applications. A derrick system with suspended counterweight as well as a heavy duty jib further enhance load capacities. The LR 1300 is often used for maintenance and assembly work on wind turbines.

- Max. load capacity - 300 t
- Max. hoist height - 169 m
- Max. radius - 115 m



Precise crane control

The control system includes all operating and control functions and permits very delicate and secure lifting. The load capacities are automatically calculated during operation.



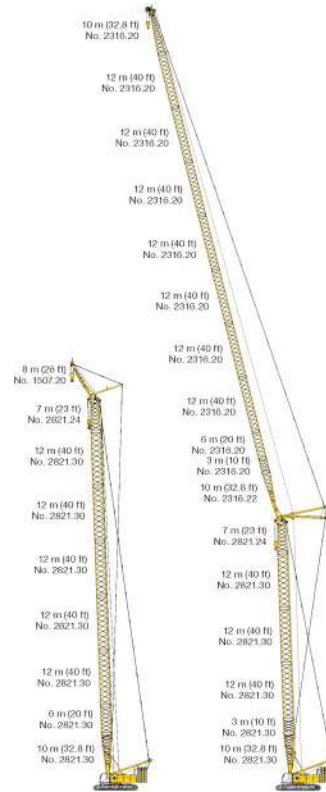
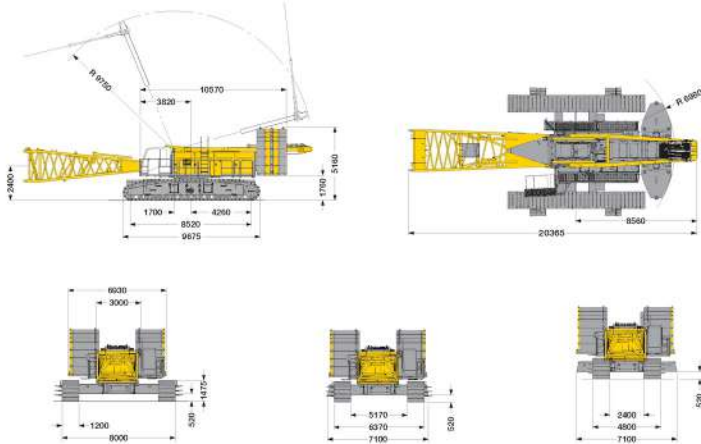
Moving with load on the hook

A key advantage of the LR 1300 is the option to move with the load on the hook. This mobility significantly increases the operating range on the construction site.



Heavy-duty jib

The heavy-duty jib is designed for maximum lifting capacity. The jib develops its full capability working with large boom lengths and derrick equipment. A typical application is the installation of wind turbines.



Max. combination	91 m	Max. combination	169 m
Main boom No. 2621.xx	83 m	Main boom No. 2621.xx	56 m
Fixed jib No. 1507.21	6 m	Luffing jib No. 2316.xx	113 m
		Max. combination	106 m
		Main boom No. 2621.xx	58 m
		Luffing jib No. 2316.xx	38 m

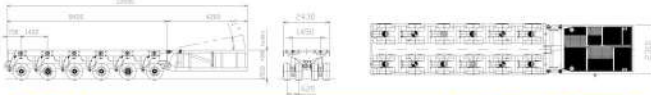
Other boom combinations are available, please contact us for further details.



Self Propelled Modular Transporters

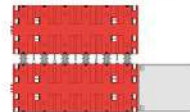
ABLE UK have a fleet of 36 axle lines of Scheuerle Generation 4 SPMTs comprising of 6 x 6 axle lines rated at 40t per axle available for deployment world-wide. They are powered by 3 x 3502 PPUs. This gives multiple combination possibilities to handle loads in excess of 1000t. Based on a 1500mm running height they have the a +/- 300mm stroke. 1200mm minimum height to a maximum of 1800mm. Extra height can be achieved by engineered packing placed on the bed of the SPMT. ABLE will be expanding the fleet in 2020 to 80 axles.

- Low loading height with SWL of 40t per axle.
- Wide wheel track ensures extreme stability.
- Lower construction, loadable and reliable.
- Steering modes for optimum maneuverability normal, diagonal, transverse and carousel.
- Large axle compensation +/-300mm guarantees uniform load distribution.
- Steering angle +/-95 degrees.
- Analogously operating electric system for safety and emergency function.
- Multiple steering modes giving greater maneuverability.
- Extremely durable, high load bearing construction.
- Compatible with the world largest fleet of electronically-steered modules.
- Modules can be linked mechanically and hydraulically to give multiple options and greater loading areas.
- These can be all linked electronically and all controlled using one operator following initial set-up.
- Extensive accessory options ensure multifunctional usability.



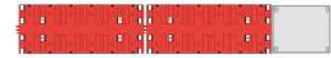
AXLE LINES	COMBINATION	TOTAL WEIGHT	PAYLOAD MAX
6		240t	216t
12		480t	432t
18		720t	648t
24		960t	864t
30		1,200t	1,080t
36		1,440t	1,296t
4 FILE		480t	432t
		960t	864t
		1,440t	1,296t
6 FILE		720t	648t
		1,440t	1,296t

Mechanically coupled "side-by-side"



2 modular bogie units
SPMT with 3 / 4 / 5 / 6 / 8 axles

Mechanically coupled "end-to-end"

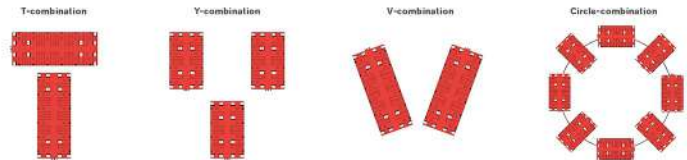


2 modular bogie units
SPMT with 3 / 4 / 5 / 6 / 8 axles

Mechanically coupled in large combinations

PPU	max. AL (48 t / 60 t)	drives axles
Z190	20/16	16
Z300	40/34	28
Z160	20/16	16
Z350	40/34	28

Open compound: The alternative to mechanical coupling



Zoomlion RT55 Rough Terrain Crane

The Zoomlion RT55 is full-wheel drive, has large ground clearance, strong off-road performance and is suitable for off-road travel. Complete with extension, half extension and complete retraction outrigger operation, no outrigger operation and driving with load.

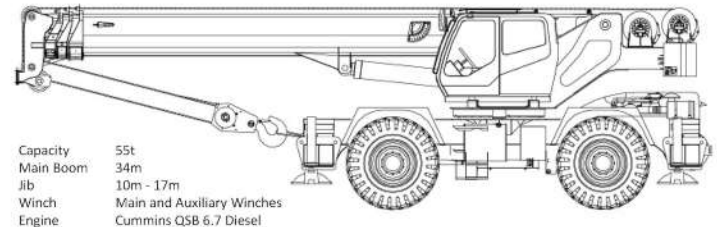
It has full-wheel steering, short wheel base, small turning radius, strong manoeuvrability; it is applicable to driving and operation in a narrow field.

The cab and operating room are integrated into one. Comprehensive lifting operation increases lifting capacity.

The utilisation of the network node control technique can realise intelligent fault diagnosis, facilitate the troubleshooting for the electrical system of the complete vehicle and improve the maintainability of the electrical system.



Fully extended outriggers - Main Boom Capacity						
5,000kg. Cwtw	Ansi B30.5		85%		360°	
Boom Length in metres - capacity listed in kilograms						
Radius (m)	10.8	15.4	20.1	24.7	29.3	34.1
3.0	54885	27306				
3.7	49945	27306				
4.6	42561	27306	26395			
6.1	32232	26943	21301	18511		
7.6	23968	22553	19709	16526	14220	
9.1		17350	16914	14320	12524	10560
10.7		13041	13395	12524	10977	9580
12.2		10247	10551	10809	9730	8482
13.7		8668	8555	8786	8732	7584
15.2			7081	7289	7366	6836
16.8			5960	6137	6210	6187
18.3			5244	5225	5289	5470
19.8				4486	4545	4713
22.3				3887	3933	4087
22.9				3465	3420	3561
24.4					2985	3112
25.9					2622	2722
27.4					2368	2386
29.0						2096
30.5						1842
32.0						1633



Wind Marshalling Equipment

Able UK owns and operate a comprehensive fleet of plant and equipment specifically designed for wind marshalling works. This includes, but is not limited to:

MEWPS:

- 2 x JLG 1350SJ: 43m Straight Boom Complete - Air Lines and 110v Extension System
- JLG 1200SJ: 36m Straight Boom
- JLG 660SJ: 20m Stright Boom



JLG 1350SJ MEWP

Forklifts:

- Manitou M50-4 equipped with 2m long forks, side shift
- Heli FD100G – equipped with 2m long forks



JLG 1200SJ MEWP

Reach stacker:

- SMV 4535 – with lifting capability on the hook attachment @ 40 tonnes



JLG 660SJ MEWP

Lighting Towers:

- 35 x TL90 Halogen & LED Complete with 240/110v Outlet plugs

Tractor / Bowsers:

- New Holland 8360 Tractor – 140hp with three-point linkage on the rear
- 9000L Towable Fuel Bowser – Diesel donkey engine and pump capable of delivering fuel at 35 l/per minute
- 9000L Vacuum Tanker – Capable of removing water from site and delivering dust suppression
- Various Fuel Cubes – 1000L – 6000L banded cubes with built in electric pumps.



SMV 4535 Reach Stacker

Construction Plant:

- Volvo EC210B Excavator – Equipped With Quick Hitch and wide range of buckets for all works.
- Doosan DX340 Excavator – Equipped With Quick Hitch and wide range of buckets for all works.
- Komatsu D65WX – PAT Blade, Topcon GPS
- CAT 16M Grader – Top Con GPS
- Doosan DL450 – Loading Shovel with 4.5 cm3 Bucket
- Thwaites 6t Forward Tipping Dumper
- Terex TA400 ADT Dump trucks
- 2 x Case 11t Compaction Rollers
- Bomag 26t Compaction Roller with built in compaction monitoring system
- Case EX1100D - 2 x 13t Smooth Drum Rollers



CAT 16M Grader



Doosan DL 450



Plant & Equipment

Attachments:

- Fortress 145R: 14t Shear
- Fortress 95R: 9.5t Shear
- LA Bounty MSD1500R Shear
- CAT Verachtor Shear
- Dehaco 1900 Selector Grab
- Dehaco 803 Selector Grab
- Trevi Benne PM240s Selector Grab
- Various Buckets to Suit All Needs
- Mechanical Scrap Grabs
- Magnet
- Concrete Muncher



Backhoe Loader:

- JCB 3CX - Complete Forks, Clamshell Bucket, Hammer Lines



Excavators:

- Hyundai HX900L - x 2 Equipped with Rotation & Hammer Lines - Maximum Attachment Working Pressure Of 370 Bar
- Doosan DX530 - Equipped with Rotation & Hammer Lines & Quick Hitch
- Doosan DX340 x 2 - Equipped with Rotation & Hammer Lines & Quick Hitch
- Volvo EC210B - Equipped with Breaker Lines & Quick Hitch
- Hyundai HX145LCR - Zero Tail Swing, Triple Boom Equipped with Rotation & Hammer Lines & Quick Hitch
- Doosan DX30Z - Equipped with Rotation & Hammer Lines & Quick Hitch



Dozer:

- Komatsu D65WX - PAT Blade, Topcon GPS

Dump trucks:

- Terex TR60
- Terex TR45
- Terex TR35

Grader:

- CAT 16M - 16M Grader, 30.5t weight with a 4.9m Moldboard fitted complete with GPS for accurate grading.



Rollers:

- Bomag BW226 - 26t Smooth Drum Roller with compaction monitoring technology.
- Case EX1100D - 2 x 13t Smooth Drum Rollers

Forklift:

- Manitou M50-4: Complete with side shift & Hydraulic fork adjustment

MEWP:

- JLG 1350SJ: 43m Straight Boom Complete - Air Lines & 110v Extension System
- JLG 1200SJ: 36m Straight Boom
- JLG 660SJ: 20m Stright Boom
- JLG 3246: 12m Scissor Lift

Piling Hammer:

- Bruce SGH16.15 Piling Hammer: 16t Drop Hammer Complete with Power Pack

Fuel Storage:

- 2 x 9000L Towable Fuel Bowers Complete with Diesel Engine & Pump
- 3 x 2000L - Static Fuel Cube Complete with Pipes & Electric Fuel Pump
- 2 x 2000L - Towable Fuel Bowers Complete with Fuel Pump
- 1 x 1000L - Static Fuel Cube
- 1 x 6000L - Static Fuel Cube

Lighting Towers:

- 35 x TL90 Halogen & LED Complete with 240/110v Outlet plugs

Equipment/Tooling:

- 100t Track Press - Complete with Power Pack Unit & Tooling
- 5000Nm Torque Gun

Able Plant Services:

At Able UK we can also offer the following services from our Able Seaton Port Workshop:

- 2 x Mobile Plant Engineers with fully kitted out service vehicles to carry out all aspects of plant repairs & maintenance.
- 1 x Fabricator / Welding who can be both mobile & site based at our Able Seaton Port workshop in Hartlepool, we can accommodate any plant repair from Shear build up maintenance, to Bucket & Grab Repairs & Fabrication to spec.
- Large workshops complete with: Static Oil Tanks for servicing, Spray Painting Area, Welding Bay, Compressor, Jacks & forklift.
- 3 x Crawler & Mobile Harbour Crane Operators
- SPMT Operators & Supervisors
- Demolition & Construction Plant Operators with vast plant qualifications.





Contact Josh Nichol - Plant & Workshop Manager

Telephone: +44 (0)1642 806080
Email: JNichol@ableuk.com



Able House

Billingham Reach Industrial Estate,
Billingham, Teesside,
TS23 1PX, United Kingdom

Tel: +44 (0)1642 806080
Email: info@ableuk.com
Web: www.ableuk.com

Able Humber Port

Rosper Road,
South Killingholme, Immingham,
DN40 3DZ, United Kingdom

Able Middlesbrough Port

27 Scott's Road,
Middlesbrough,
TS2 1EX, United Kingdom

Able Seaton Port

Tees Road,
Hartlepool,
TS25 2DB, United Kingdom